



NINJA FLEX

User's manual - Use and Maintenance
Drain Cleaning Machine

EN

1 - SPECIFICATIONS

KAMMAK NinjaFlex Drain Opening Machine will be your new favorite with its lightness, easy portability and high speed!

You determine the boundaries of your work area thanks to the ease of use without electricity and wireless!

NinjaFlex machines can also be operated with a channel camera and probe (transmitter). With this option, it is possible to see the drain while cleaning it.

NinjaFlex enables faster installation and faster cleaning compared to older generation drain cleaning machines, providing additional time savings.

TECHNICAL FEATURES

Drain Capacity (Nom.) : 2" to 6" (50 - 70 - 100 - 150 mm)

Cable Diameter (without Sheath) : 5/16" (8mm)

Cable Assy. Diameter (with Sheath) : 5/8" (16 mm)

Cable Assembly Length : 15 m

Rotational Speed : Maximum 2500 RPM

Drill Attachment : 5/16" Hex (8 mm)

Weight (without Drill/Knocker) : 22 lbs. (10 kg)

Operating temperature : -10°C to 80°C

*Drill not included.

BOX CONTENTS:

- 1 pcs Kammak NinjaFlex Drain Cleaning Machine
- 3 pcs Chain Knocker
- 1 pcs Operating Manual
- Lifetime Warranty



WARNINGS

1-) This machine is made to clean the drains. If used correctly it will not damage a drain that is in good condition and has been properly designed, manufactured and maintained. If the drain is in poor condition or has not been designed, manufactured or maintained properly, drain cleaning may not be effective or may cause damage to the drain. The best way to determine the condition of a drain before cleaning is by visual inspection with a camera. Improper use of the drain cleaning machine may damage the drain cleaning machine and the drain. This machine may not clear all blockages.

2-) Before using the machine, confirm that the cable group moves smoothly and freely in and out of the machine. Check that the cable assembly is straight and undamaged.

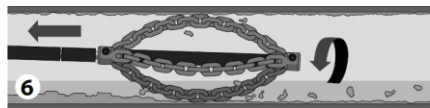
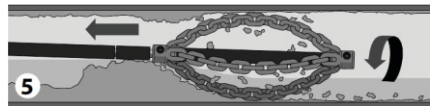
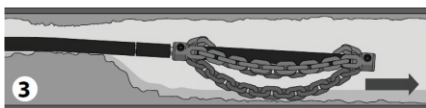
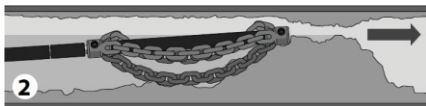
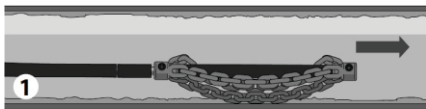
3-) Replace any worn or damaged equipment before using the machine. Make sure the chain end is properly installed and secured to the cable.

4-) Check if there is a safe and suitable work area. Operate in a clean, flat, stable and dry area. Do not use the machine in a wet area.

5-) Do not use with a corded drill. Working with a corded drill increases the risk of electric shock.

6-) One person should control both the cable assembly and the battery drill. Do not lock the drill button in the ON position during operation. If the cable stops rotating, the operator must be able to release the drill button to prevent the cable from twisting and breaking and reducing the risk of injury.

2 - GENERAL USAGE STEPS



3 - USE

1-) Advance the chain end (usually while it is not rotating) to the section of the drain that needs to be cleaned.

2-) If there is a blockage, pass the chain end through the blockage.

3-) Operate the cable/chain end at full speed.

4-) Continue rotating the tip. Gradually advance the cable assembly so that the chain end can clear the blockage.

5-) Continue to gradually move the cable group in a rotating manner so that the chain end can clean the walls of the drain.

6-) Do not pull the chain end from the drain while turning.

7-) If complete cleaning is required, repeat the above procedure.

8-) When you are done cleaning, manually pull the cable group from the drain and push it back into the drum. Prepare the machine for transportation.

4 - CLEANING

It is a good practice to use a towel to wipe dirt and debris from the sheath as the cable assembly is pulled from the drain and placed back into the drum. This will keep the drum clean and reduce the chance of the cable assembly getting stuck in the drum.

Lubrication: Machines come from the factory lubricated for life.

5 - WARRANTY AND TECHNICAL SERVICE

Dear Customer, we kindly ask you to comply with the following recommendations:

-When you receive your product, have the warranty certificate approved by your authorized dealer.

-Use your product according to the principles of the operating manual.

-When you have a service request regarding your product, please contact our call center at the phone numbers below.

Kammak Call Center provides service during working hours. You can request the service you desire regarding your product by calling our call center number from your landline or mobile phone. You can also reach our Call Center by filling out the form at www.kammakpumps.com.

Kammak Call Center
+90 224 223 2898

Kammak Whatsapp Center
+90 546 223 28 98



Parts of these tools contain valuable materials and should be recycled. There may be companies specializing in recycling in your area. Dispose of parts according to applicable regulations. For more information, contact your local authority waste management unit.

During use, handle the machine carefully and avoid damage.

To reduce the risk of serious injury, only use accessories specifically designed and recommended for the KAMMAK NinjaFlex Drain Cleaning Machine.

